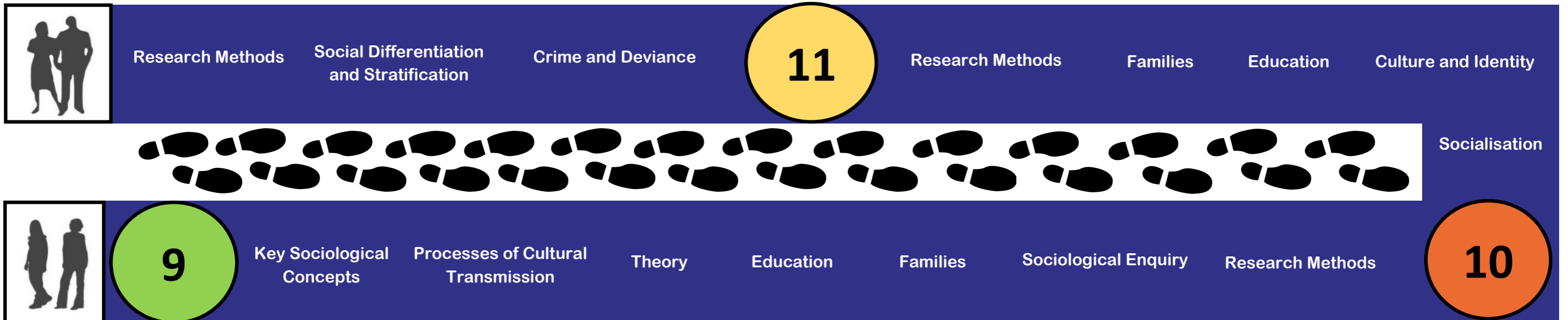
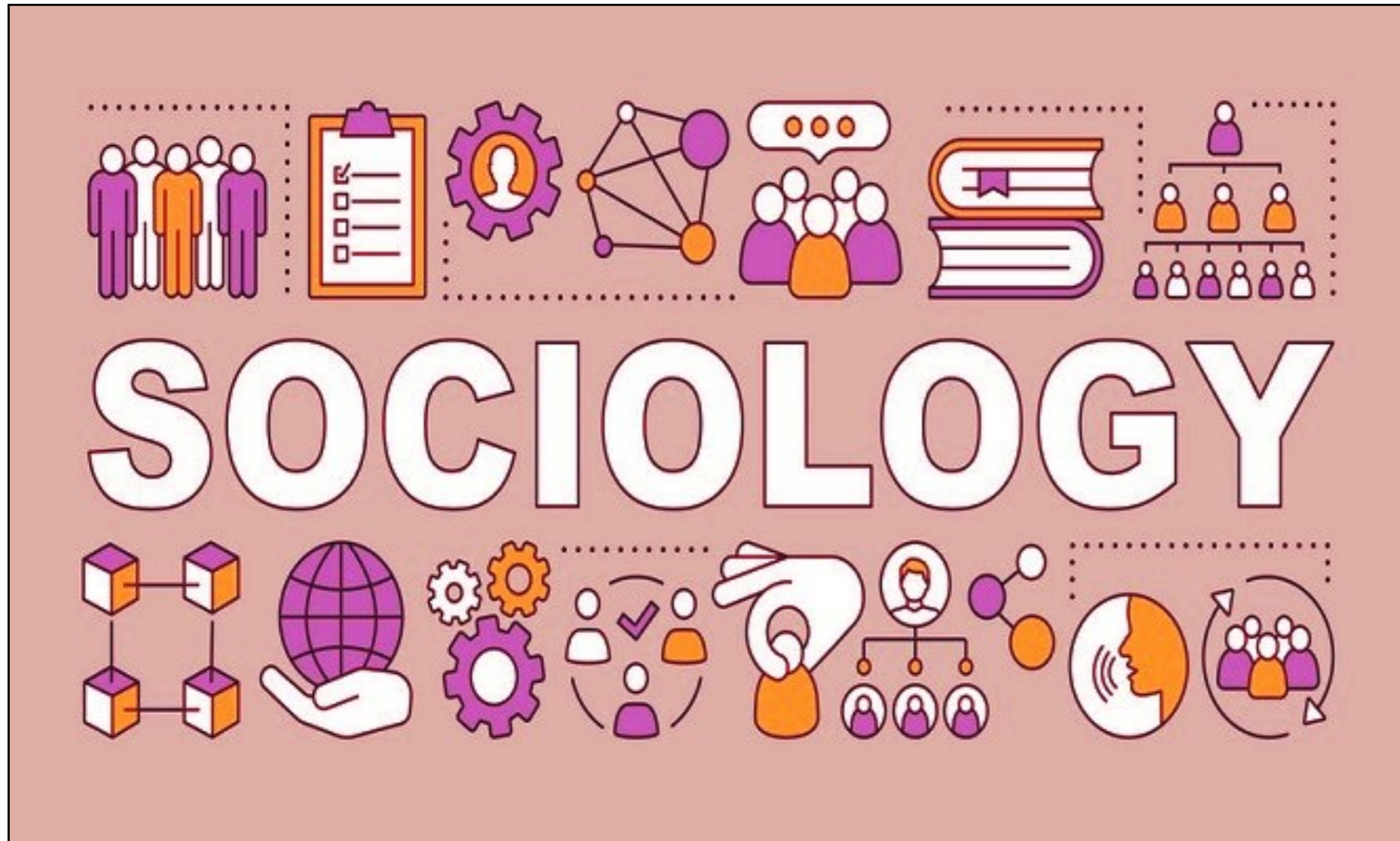


Subject Learning Journey - Sociology GCSE



Subject Learning Journey - Sociology A-Level



Theory and Methods

Objectivity and Values

Functionalism

Marxism

Feminist Theories

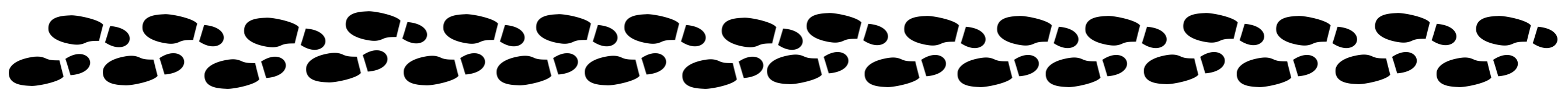
Action Theories

Globalisation, Modernity and Postmodernism

Sociology and Social Policy



Sociology and Science



Beliefs in Society

Qualitative Research Methods

Quantitative Research Methods

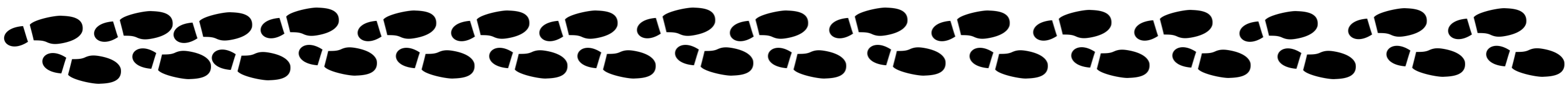
Secularisation and Growth of Religion

Religion in the Contemporary World

Religious Organisations and Society

Religious Organisations

Social Change, Religious Beliefs and Practices



Ideology, Science and Religion

Crime and Deviance

13

Functionalist, Strain & Subcultural Theories

Interactionism & Labelling

Class, Power & Crime

Realist Theories

Gender, Crime & Justice

Ethnicity & Crime

Crime & the Media

Globalisation, Green & State Crime & Human Rights

Control, Punishment & Victims



Families and Social Policy

Families

Methods in Context

Family Diversity

Changing Family Patterns

Demography

Theories of the Family

Childhood

Couples

Ethical Issues

Positivism and Interpretivism

Sources of Data

Research Design



Introduction to Sociological Theories

Education

Government Policy of Education



12

Functionalism

Marxism

New Right

Feminism

Social Action

Class and achievement

Ethnicity and achievement

Gender and Achievement

The Role of Education